

**Village of Elberta
Recreation Plan
2014–2019**

Village of Elberta
Benzie County
Michigan

Prepared for:

Village Council

Reggie Manville, President

Diane Jenks, President Pro Tempore

Joyce Gatrell

Ken Holmes

Linda Manville

Matt Stapleton

Jennifer Wilkins

Sharyn Bower, Clerk

Laura Manville, Treasurer

Prepared by:

Village of Elberta Parks and Recreation Commission

151 Pearson Street

Elberta, MI 49628-0008

(231) 352-7201

Table of Contents

Introduction	1
Community Description	2
Figure 2 Base Map	3
Figures 3 & 4 Topography	4
Figures 5 & 6 Population Density	5
Figure 7 Future Land Use Map	6
Figure 8 Zoning Map	7
Administrative Structure	8
Recreation Inventory	9
Public	
Private	
County Recreation	
Figure 10 County Recreation Map	
Description of the Planning and Public Input Process	14
Goals, Objectives, and Action Plans	15
Appendix A: Detail Maps of Village Parks	17
Appendix B: Proposed Beach Road Project	23
Appendix C: Possible Future Work on Life Saving Station	25
Appendix D: Public Input Documentation	26
Appendix E: Approval Documentation	33

Introduction

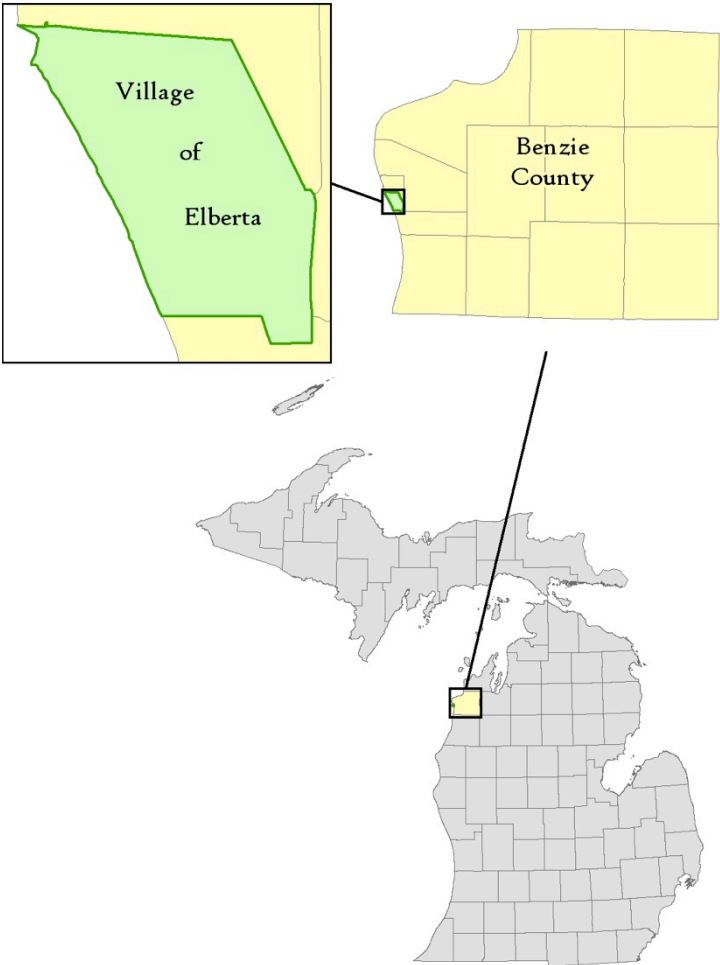
The following Recreation Plan provides a framework for utilizing the Village's resources for recreational purposes in order to effectively meet identified and anticipated needs. This plan identifies present and anticipated recreational needs and program projects to meet the future demands of residents and visitors alike. As a result, this plan will provide a comprehensive strategy for meeting those community recreation needs. The plan is intended to complement the Village's overall planning and development efforts.

The planning process undertaken for this plan incorporated the use of Village residents, trustees, and staff. The input helped in generating a future development plan for the Village's recreational facilities. Another element of this process is an assessment of the Village's local and area wide recreational resources. This includes an inventory of public and private recreational facilities. From this inventory, overall recreation goals and objectives for the Village are established.

The Village of Elberta's Recreation Plan concludes with an action program that suggests the direction and the activities that can be adopted for future recreational development and programming. This action program establishes program priorities, identifies financial requirements, and discusses the general administration of the overall program. This plan has been prepared to identify and propose a strategy for eliminating those deficiencies in the Village's recreation opportunities that can be accomplished within a five-year time frame. The plan has also been prepared to satisfy recreation planning requirements established under Michigan Department of Natural Resources (MDNR) guidelines.

Community Description

Figure 1



The Village of Elberta is a small village located at the western shore of Benzie County (Figure 1). The Village was first inhabited by settlers in the 1850s and soon became a center for the commercial shipping industry, specifically lumber. In 1866, the federal government constructed the first navigational channel in the area. This channel acted as the catalyst for future economic growth of the Village and the region. The channel served as the means for the development of saw mills, an iron foundry, a Lake Michigan car ferry, and other port-based businesses until the early 1980s when the Ann Arbor Railroad ceased its operation.

Recreation and associated leisure activities have become a significant part of the economic activity in the area. The type of activities preferred by a community's residents often

reflects the specific characteristics of the community. Such characteristics include a community's population growth rate, the age structure of the population, the social-economic composition of the population, land development patterns, available natural resources, climate, and geographical location. All these characteristics can be correlated to a community's recreational preferences in one manner or another, describing the particular quality of existing recreational opportunities as well as identifying some of the factors that will influence recreational needs in the future. Figures 2 through 8 on the following pages show different characteristics of the Village and the surrounding community.

Figure 2: Base Map

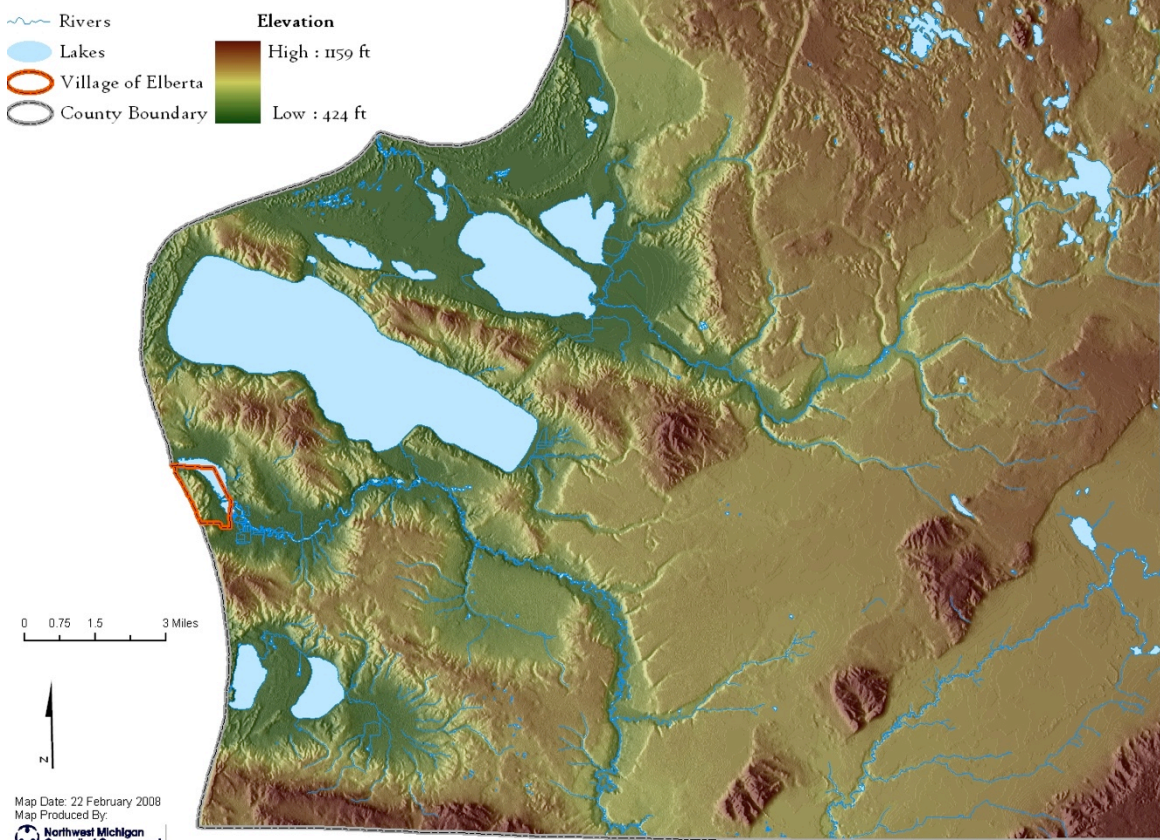




Figures 3 & 4: Topography

The maps on this page show the topography of the Village and the surrounding county. Within the Village boundaries the Elevation of the area ranges from about 580 feet to approximately 865 feet. Elevation in the surrounding county ranges from 424 feet to 1,159 feet. Elevation data was acquired from the Michigan Center for Geographic Information's Data Library.

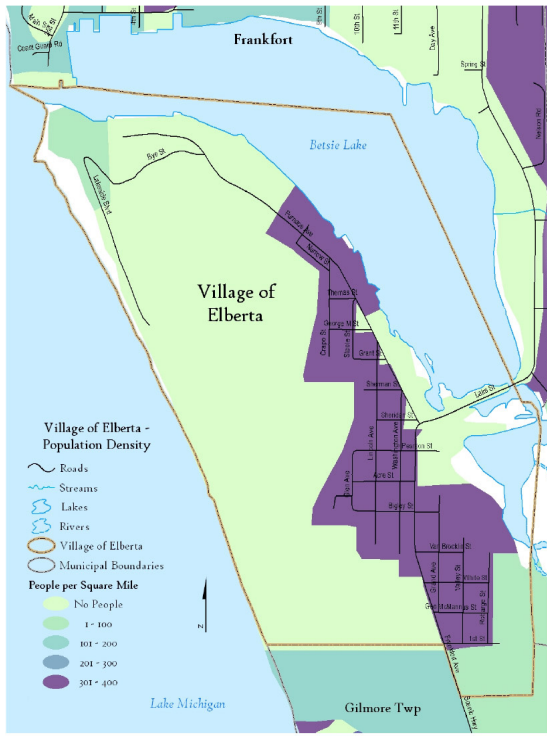
Benzie County - Topography



Map Date: 22 February 2008
 Map Produced By:
 Northwest Michigan Council of Governments

Data Source: Michigan Center for Geographic Information, Michigan Geographic Framework Version 4b

Figures 5 & 6: Population Density



The maps on this page show the population density (number of people per square mile) of the Village and the surrounding county. The data source for this information is the 2010 Census. It is shown to a block level. The Village's population is 372 as of 2010. The Village Master Plan states that within the 0.7 square miles of land area available in the Village, 78.1% is vacant, 12.1% is residential, and 9.8% commercial or industrial.

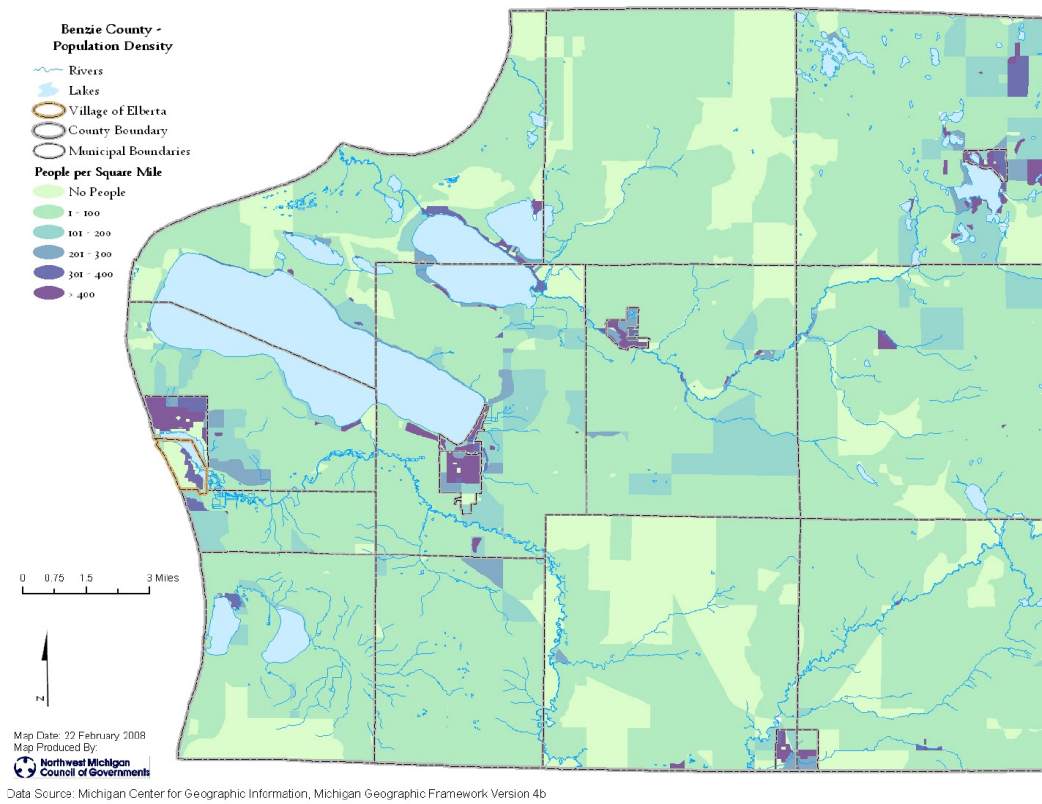


Figure 7: Future Land Use Map

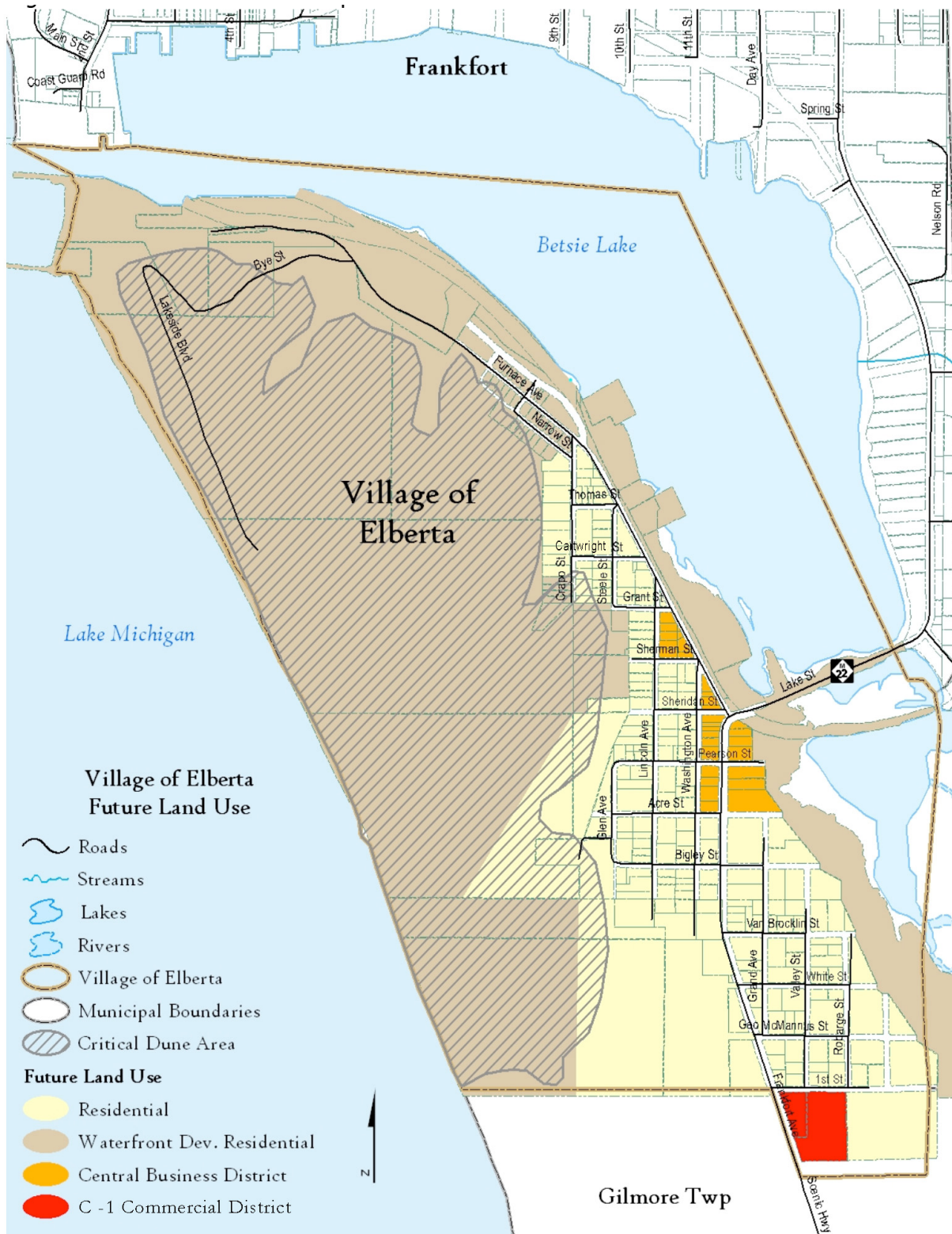
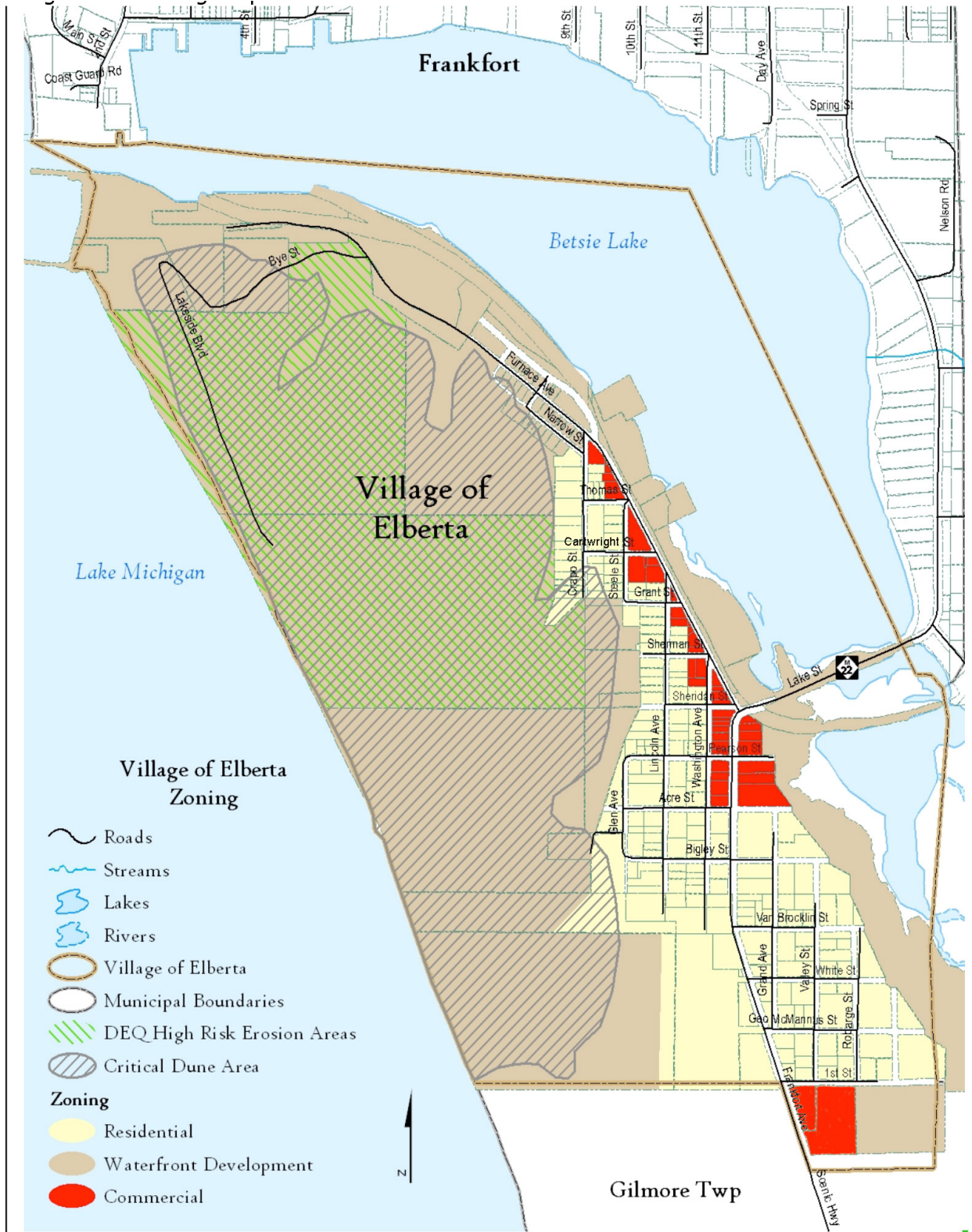


Figure 8: Zoning Map

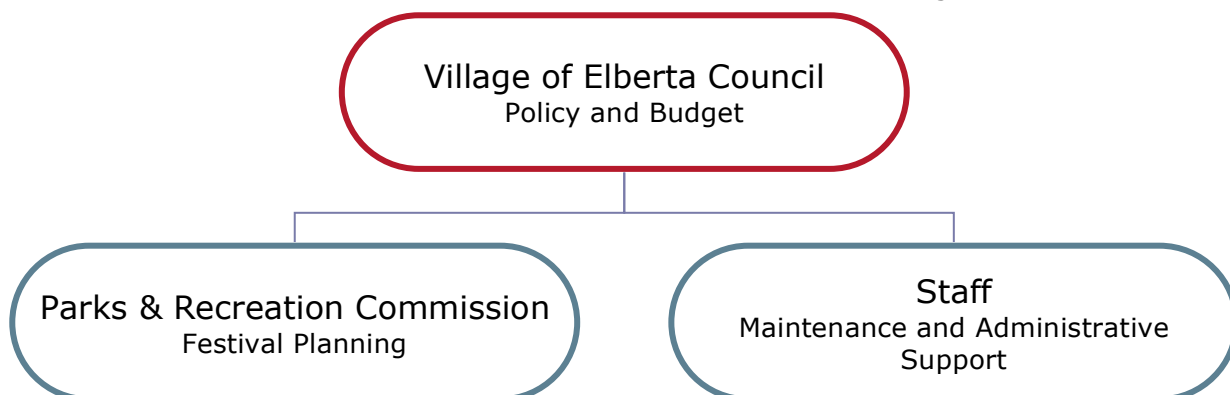


In Figures 7 and 8 the Critical Dune Area and High Risk Erosion Areas within the Village are shown. According to the Michigan Department of Environmental Quality (DEQ), Critical Dune areas protected by Part 353 represent the highest and most spectacular dunes extending along much of Lake Michigan's shoreline and the shores of Lake Superior, totaling about 80,000 acres in size. The legislature has found that Critical Dune areas of the state are a unique, irreplaceable, and fragile resource that provide significant recreational, economic, scientific, geological, scenic, botanical, educational, agricultural, and ecological benefits to the people of Michigan. Local units of government should have the opportunity to exercise the primary role in protecting and managing critical dune areas in accordance with this part. The benefits derived from alteration, industrial, residential, commercial, agricultural, silvicultural, and the recreational use of critical dune areas shall occur only when the protection of the environment and the ecology of the critical dune areas for the benefit of the present and future generations is assured.

Also according to the DEQ, high risk erosion areas are those shorelands of the Great Lakes and connecting waters where recession of the zone of active erosion has been occurring at a long-term average rate of one foot or more per year. The erosion can be caused from one or several factors. High water levels, storms, wind, ground water seepage, surface water runoff, and frost are important factors causing erosion. The high risk erosion area regulations establish required setback distances to protect new structures from erosion for a period of 30 to 60 years, depending on the size, number of living units and type of construction. Other setback requirements are applicable for home restorations and additions to existing structures. Any person or local government agency proposing to erect, install, move, or enlarge a permanent structure on a parcel must obtain a permit prior to the commencement of construction.

Administrative Structure

Chart 1: Organizational Chart



The park and recreation functions in the Village of Elberta are overseen by the Village Council. The Village also has a Parks and Recreation Commission whose role has been to orchestrate fundraising events to maintain and upgrade parks and to sponsor events such as the annual Farmers Market and Solstice Festival. The

Village employs one staff person under their Major and Local Streets Fund who spends a portion of his time maintaining the parks within the Village limits. While there is no specific designated funding for parks & recreation within the Village budget some funding to maintain the parks comes out of the Village's General Fund and revenue received for renting out park facilities. Monies raised through the various fundraisers put on by the Parks and Recreation Commission are put toward upgrading playground equipment, park maintenance, and other projects to enhance community life. The projected annual revenue for 2013 is approximately \$TK,000. The Parks and Recreation Commission currently has three Committees that run on volunteer effort. The Elberta Historical Preservation Committee, The Solstice Festival Committee, and the Beach Committee. The Village currently collaborates with the North West Michigan Council of Governments, The Lakes to Land Initiative, The Betsie Valley Rails to Trails, the Frankfort Chamber of Commerce, and the local MSU Extension office.

Recreation Inventory

The Village of Elberta maintains a fair amount of parks and recreation services for a village of its size. The inventory of recreation within the Village was conducted via aerial photo interpretation and on-site visits. Figure 9 shows the location of recreation within the Village boundaries. Below is a list of every park, including a description and the amenities available at each. The Accessibility Assessments were based on criteria provided in the Michigan Department of Natural Resources' Guidelines for the Development of Community Park, Recreation, Open Space, and Greenways Plans.

Public:

1. *Elberta Historic Waterfront Park* – This Neighborhood Park is located on the shores of Betsie Bay and includes over 1,200 feet of scenic water frontage over 10 acres of land. This park's amenities provide for activities such as fishing, picnicking, and group gatherings that include: weddings, reunions, outdoor theater, and other gatherings. Development of this park was made possible through two grants awarded in 1998 and 1999. The first grant (TF98-033) titled Ann Arbor Railroad Park/Betsie Valley Trail Head Dev. provided funding that allowed for the development of elements such as: restroom/concession building, utilities (water & sewer), fishing deck, concrete amphitheater stairway, site lighting, park furnishings, and landscaping/plantings. The second award (TF99-014) titled Elberta Historic Waterfront Trailhead Park-Phase II provided funding for the development of elements such as: a picnic pavilion, performance pavilion, Betsie Valley Trail Paving, parking lot (54 spaces)/entry road, site lighting, viewing event deck, landscaping, and drinking fountain. All the elements from both grants were built and are still in good condition except for the public restrooms and concession facility. Accessibility Assessment = 5. Facilities include:
 - a. Covered Picnic Pavilion housing 12 or more picnic tables
 - b. Two parking lots including handicapped parking

- c. Children's playground with bark bedding
- d. Swing set with 6 swings and 1 handicap swing provided by Park & Rec
- e. 1 donated bicycle rack
- f. Lighted paved paths/trails accessible to the handicapped
- g. 10 park benches
- h. Outdoor amphitheater
- i. Covered fishing pavilion
- j. Life Saving Station which is available for rent to group gatherings
- k. Restrooms (inside Life Saving Station building; not accessible to general public)
- l. Drinking fountain
- m. Sundial
- n. Informative historical markers
- o. Future: Public restrooms
- p. Future: Historical display of remnants of car ferry aprons
- q. Future: Historical display of remnants of iron foundry

For a detailed map of this park please see Appendix A.

2. *Elberta Lake Michigan Beach* – This community park is located on beautiful Lake Michigan and includes just over one mile of public beach access. Along with beach access this park is often used for fishing, from the beach and from the pier. Accessibility Assessment = 1. Facilities include:
- a. Nonfunctioning primitive restrooms
 - b. Handicapped accessible pier
 - c. Scenic Overlook parking
 - d. Handicapped parking at beach access
 - e. Boardwalk
 - f. Future: Concessions
 - g. Future: Restrooms
 - h. Future: Road extension with more parking
 - i. Future: Signage prohibiting motorized vehicles in critical dune areas

For a detailed map of this park please see Appendix A.

3. *Dudley Penfold Memorial Park (aliases: Mini-pond/Pavilion Park/Elberta Marina)* – This 4 acre Neighborhood Park is located in the heart of Elberta on Betsie Bay and is directly accessible from M-22. Accessibility Assessment = 1. Facilities include:
- a. Covered picnic pavilion
 - b. 12 picnic tables including one handicap accessible picnic table
 - c. 3 grills
 - d. Wooden playground train surrounded by bark bedding
 - e. Boat launch suitable for shallow boats such as kayaks and canoes
 - f. Pedestrian bridge
 - g. Access to the Betsie Valley Trail
 - h. Trailhead parking
 - i. Public restroom

For a detailed map of this park please see Appendix A.

4. *The Community Building* – This Neighborhood Park sits at the south end of the Village on 7 acres of land that was originally part of the local school property. The property was split and the side with the school was sold. The remaining portion is used for sports and a public meeting room and classes/party rental. Accessibility Assessment = 2. Facilities include:
 - a. The Community Building
 - b. Restrooms
 - c. Baseball field
 - d. Bleachers
 - e. Swing set
 - f. Teeter-totter
 - g. Monkey bars
 - h. Tetherball pole
 - i. Mini Basketball Court
 - j. Available to rent for classes, parties or meetings

5. *Tot Park* – This ¼ acre mini-park is located within the residential area of the Village. It serves as a local playground for Village residents. Accessibility Assessment = 1. Facilities include:
 - a. Sandbox
 - b. Swing set
 - c. Slide
 - d. Teeter-totter
 - e. 2 Spring horses (to be removed)
 - f. Merry-go-round
 - g. 1 Picnic table
 - h. Park bench
 - i. Fencing on three sides

6. *Veterans Park* – This ½ acre mini-park is maintained as open space within the residential area of the Village. There are no amenities or facilities to speak of in relation to recreation. Accessibility Assessment = 1.

7. *Anderson Park* – This ½ acre mini-park located within the residential area of the Village and is used as a playground. Accessibility Assessment = 1. Facilities include:
 - a. Sit up Bench
 - b. Pull up bars
 - c. Exercise Glider
 - d. Basketball court with two hoops
 - e. 1 Park bench
 - f. 2 Picnic tables
 - g. Fencing on all sides

8. *Betsie Valley Trail* – This Trail Park extends approximately 23.5 miles throughout Benzie County. It briefly extends into the Village of Elberta for a ½ mile. This trail is widely used for both hiking and biking. It serves as a connection between different communities and parks within Benzie County. It is hoped that this trail will be extended along the south shore of Betsie Bay and on to the beach, if funding is obtained.

9. *Elberta Dunes South* -

Facilities include:

- a. Nature trails
- b. Welcome signage
- c. Future: Snowmobile run along designated area
- d. Future: Parking
- e. Future: Natural history signage
- f. Future: Bench(es) at top of trail
- g. Future: Restroom
- h. Future: Viewing platform

Private:

(For a detailed map of the marinas please see Appendix A)

10. *Betsie Bay Marina* – This privately owned marina is located on Betsie Bay and includes 56 slips; a boat launch; refueling station; and a storage/maintenance shed.

11. *Betsie Shores Dockminiums* – This privately owned marina is located on Betsie Bay. 42 slips available.

12. *North Star Marina* – This privately owned marina is also located on Betsie Bay and includes 24 boat slips.

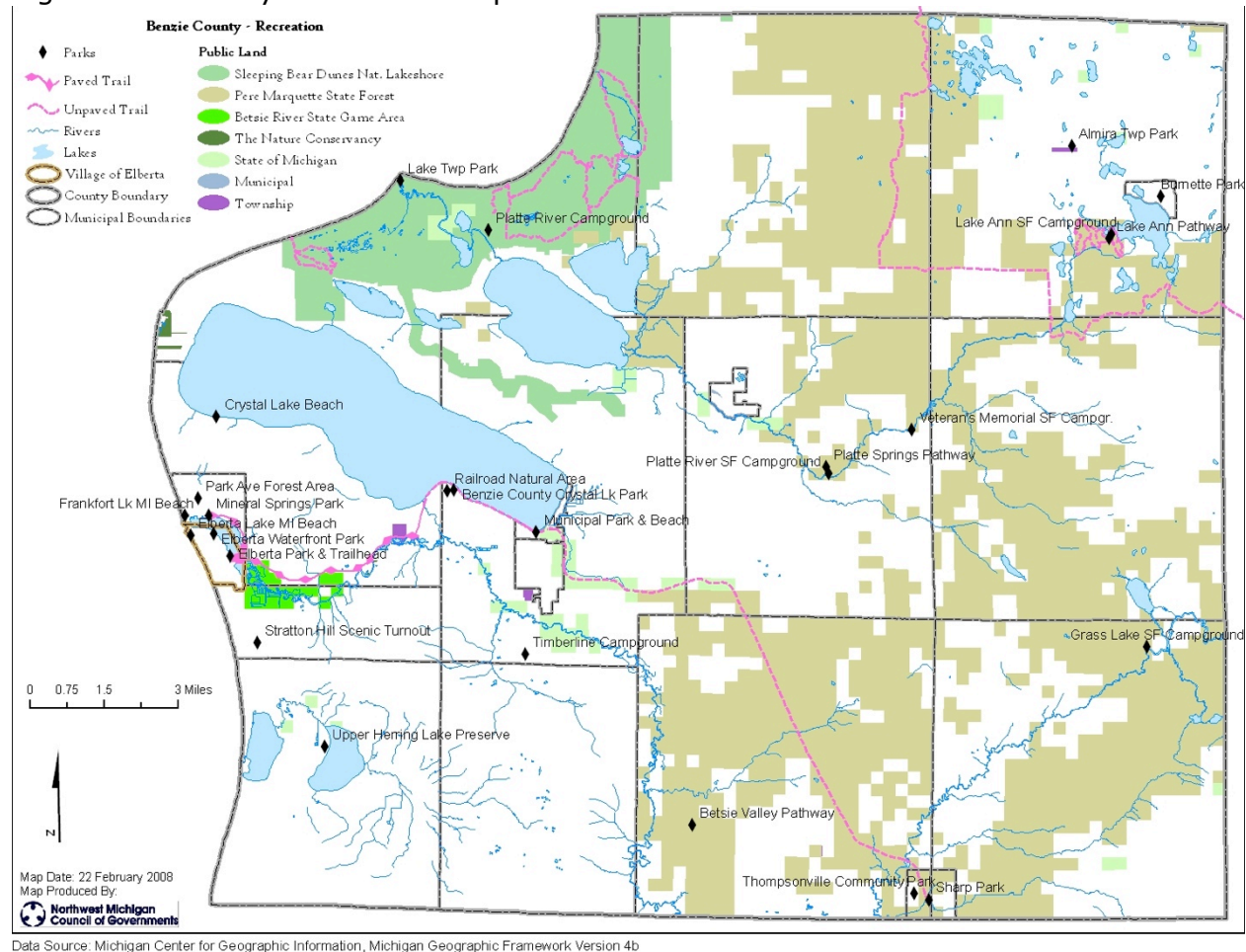
County Recreation:

Recreation outside the Village Boundaries is abundant in Benzie County. Figure 10 shows the Village's proximity to many state and federal lands including: Sleeping Bear Dunes National Lakeshore; Pere Marquette State Forest; Betsie River State Game Area; The Nature Conservancy lands; and other State of Michigan Lands. Proposed recreation throughout Benzie County was identified through public input sessions for the Northwest Michigan Regional Non-Motorized Strategy. The resulting maps can be viewed online at: <http://www.nwm.org/nonmotorizedstra.asp>. Though completing the Beach-to-Beach Trail in the Village of Elberta was identified as a proposed route it was not selected as a priority.

Figure 9: Village Recreation Map



Figure 10: County Recreation Map



Description of the Planning and Public Input Process

One public input meeting was held February 14, 2013 in the Village of Elberta at the local former Library. A second session was held before the regular council meeting on April 18, 2013. These meetings offered residents and other members of the public to come share their interests about recreation within the Village. Notification of this meeting was posted in local businesses and notices were put up in the Village offices, the post office, and the library a couple of weeks prior to the meeting date. At the workshop maps showing current recreation were available for viewing and drawing proposed recreation. Questionnaires were given to the workshop attendees that asked them about their view of recreation in the Village. TTKK people attended the workshops and offered their input about recreation. The results of the public input workshop can be seen summarized in Figure 11.

The draft plan became available to the public for viewing on April 2, 2013. A notice regarding when and where the draft plan would be available for viewing was put in the local paper (Benzie County Record Patriot). Comments and questions were received by Jennifer Wilkins and the Village Office prior to the end of the day on

April 17. All comments received were considered in finalizing the plan. The plan was then presented for adoption to the Village Council during its TKTTK meeting. Notice of this meeting was placed in the local paper and posted at the village offices five weeks prior to the meeting date. The Elberta Village Council voted to adopt the recreation plan on TKTKTKTK.

Goals, Objectives, and Action Program

Goal:

The Village of Elberta seeks to provide its residents and visitors access to recreational opportunities that enhance the character and setting of the village.

Objectives:

- A. Connect Elberta Lake Michigan Beach and the City of Frankfort's Lake Michigan Beach with a trail extension from the Betsie Valley Trail (Segment D). This includes improving the parking area on M-22 for the trailhead to provide better accessibility for the disabled and access to the Village downtown area.

Action Strategy: (2014-2019) Seek funding where available from grants and trail organizations that can match money

- B. Gravel, grade, and clearly define Lakeside Blvd and improve parking to add handicapped accessibility. Install signage designating where motorized vehicles are prohibited. Add picnic facilities and composting toilet restrooms at the entrance to the Elberta Lake Michigan Beach. A long term objective would be to provide year round access to the beach by either creating a new entrance drive and/or extending the Beach-to-Beach Trail from the Historic Waterfront Park with the cooperation of property owners.

Action Strategy: (2014-2019) Reapply for Great Lakes Fishery funding and also seek other funding sources. Seek donations from members of the public. Possible fundraising campaign during annual Solstice Festival.

- C. Provide continued maintenance for existing parks in the Village Recreation System. Weatherize, update and repair the Life Saving Station and the Community buildings for year around use and rentals. Build a public restroom at the Dudley Penfold Marina Park to serve trailhead users, Farmer's Market attendees and the general public. Remove existing dock platforms and develop a raised boardwalk fishing platform and improve the boat launch.

Action Strategy: (2014-2019) Have the Parks & Recreation Commission develop a volunteer program to provide park maintenance and/or seek ways

to contribute funding for maintenance. Seek funding from grants where available.

- D. Upgrade Elberta Dunes South trail by adding a parking lot, trail signs, benches, lookout platforms, natural-history signage, and recreational activities.

Action Strategy: (2014-2019) Apply for the Recreation Passport Grant or any other funding that is appropriate. Some funding already set aside by Conservancy for such things as benches and signs, possibly platform. Funding already secured for parking area; work should be completed by end of 2013.

- E. Build self-composting style permanent restrooms, as in State Parks, in the following Parks:

Elberta Beach 4 single stalls

Waterfront Park 4 single stalls

Farmers Market 2 single stalls

Elberta Dunes South 4 single stalls

Action Strategy: Fundraising campaign during 2013 Solstice Festival; seek other funding from donations and grants

Appendix A: Detail Maps of Village Parks

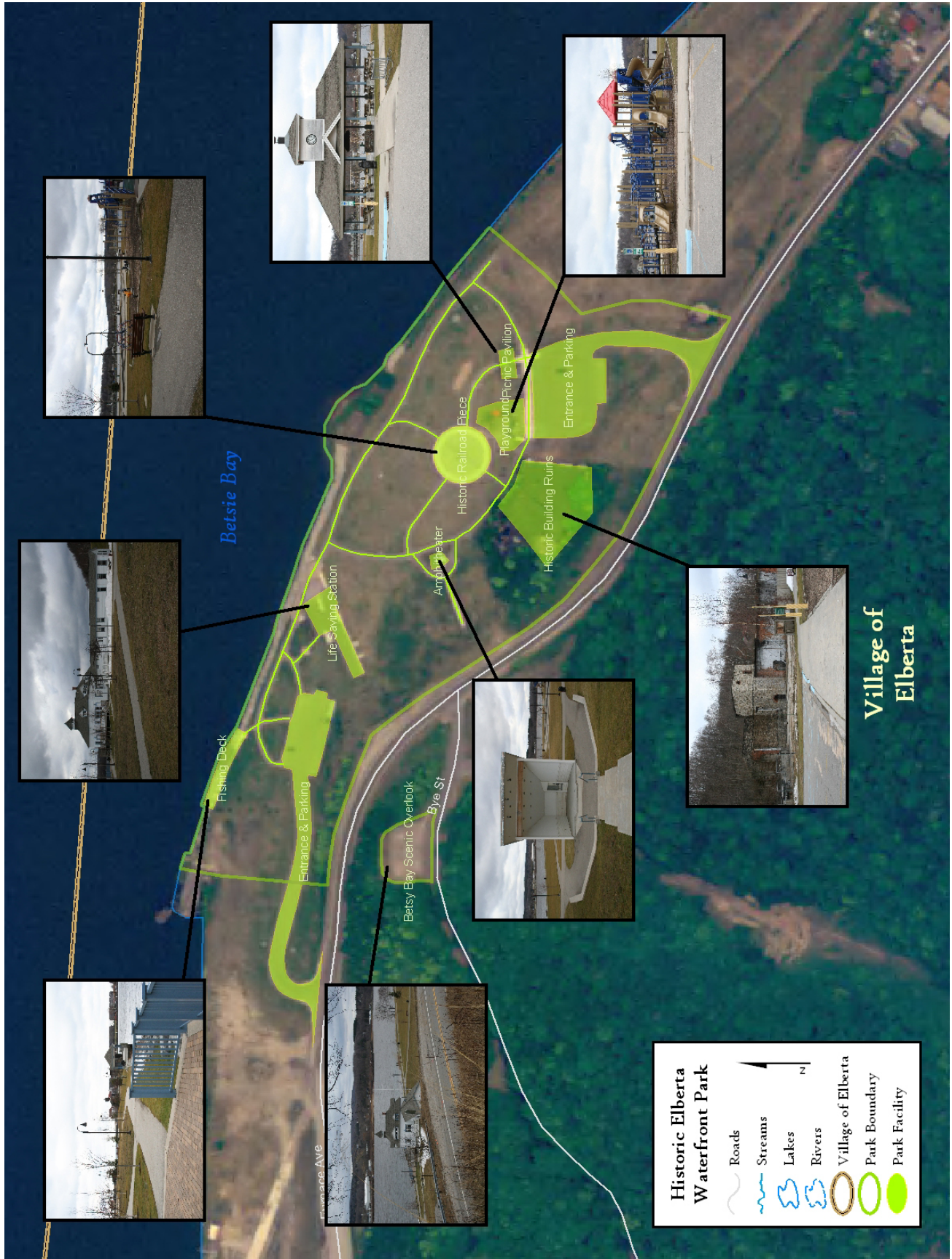
Elberta Historic Waterfront Park

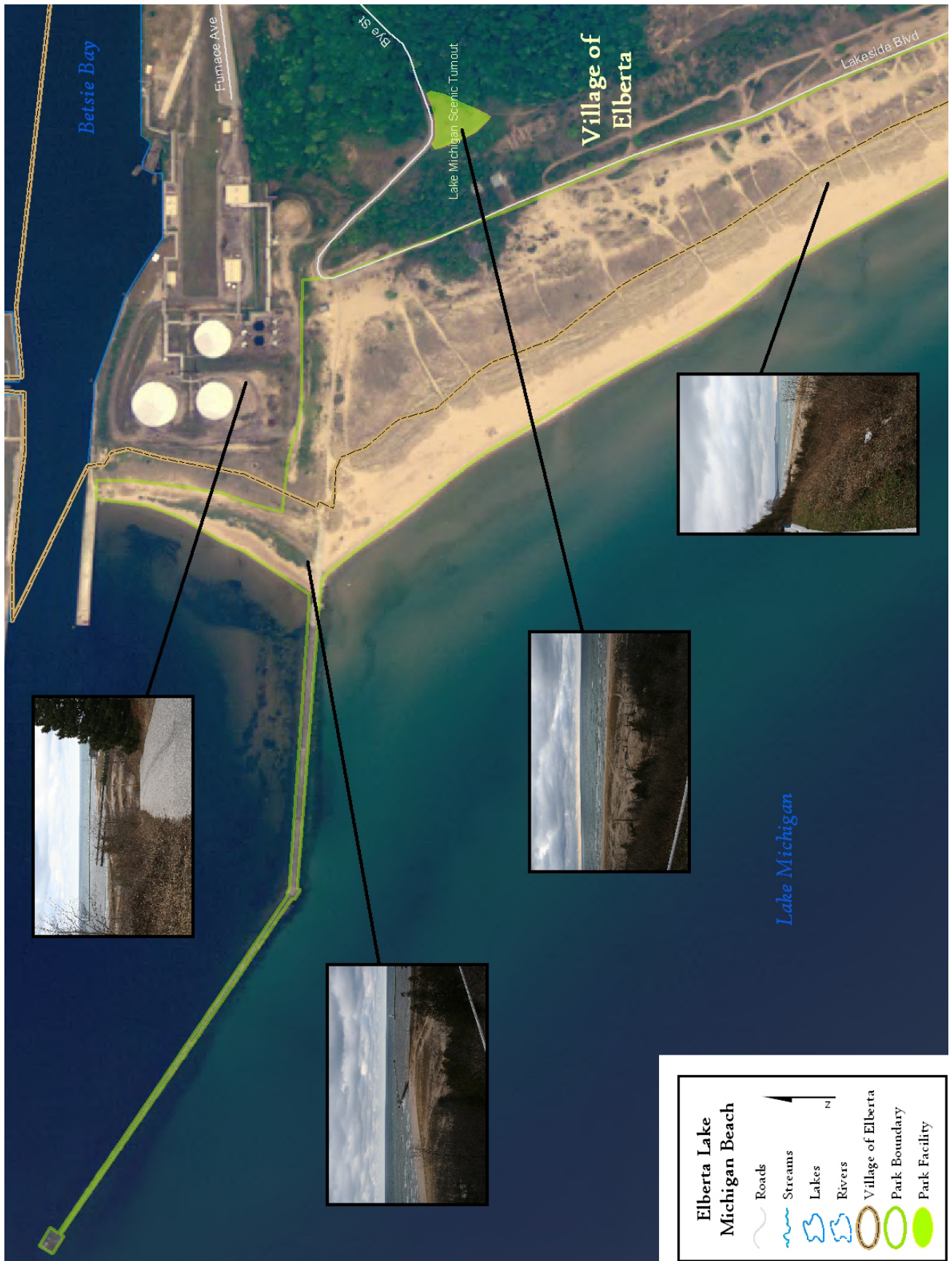
Elberta Lake Michigan Beach

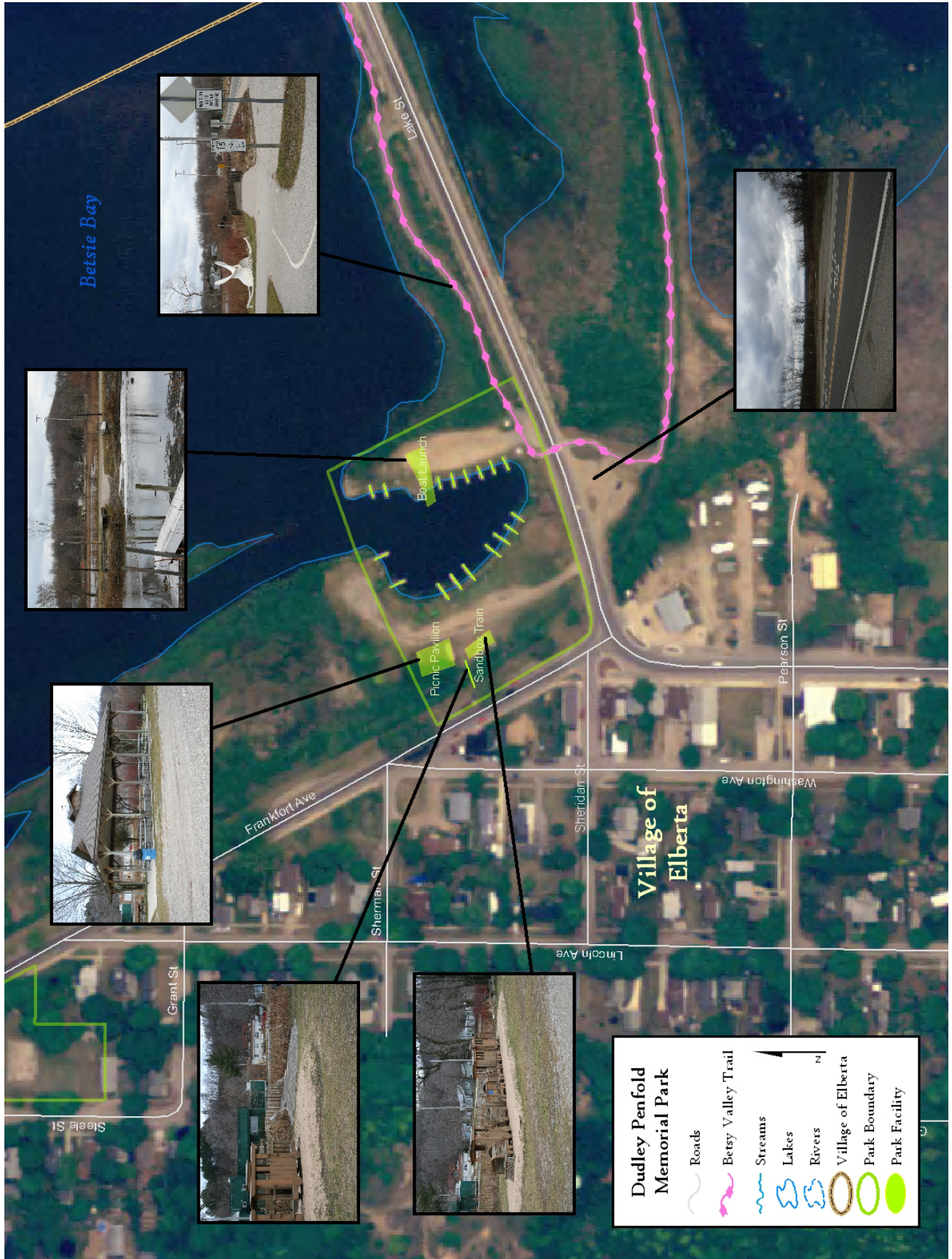
Dudley Penfold Memorial Park

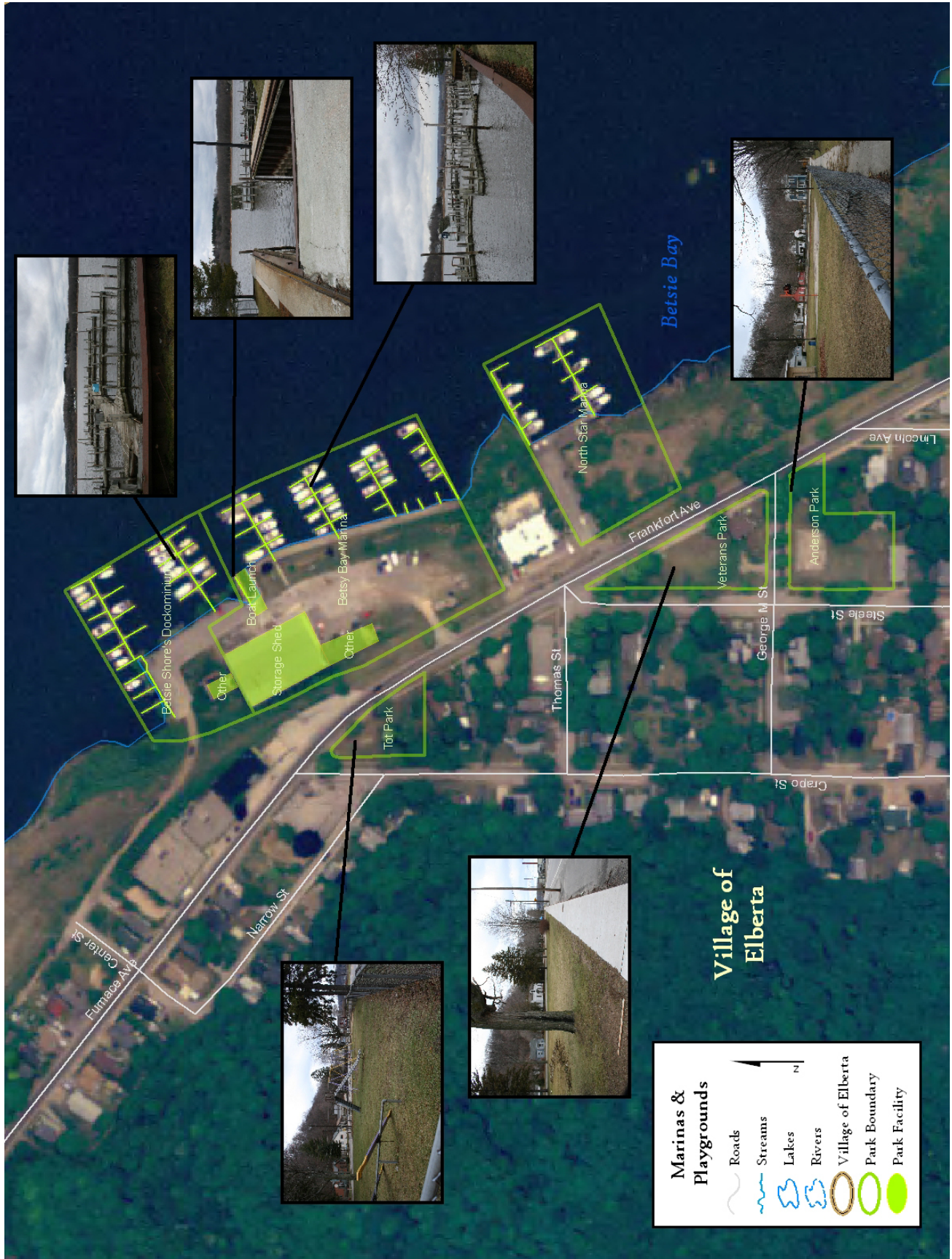
Public & Private Marinas and Neighborhood Playgrounds

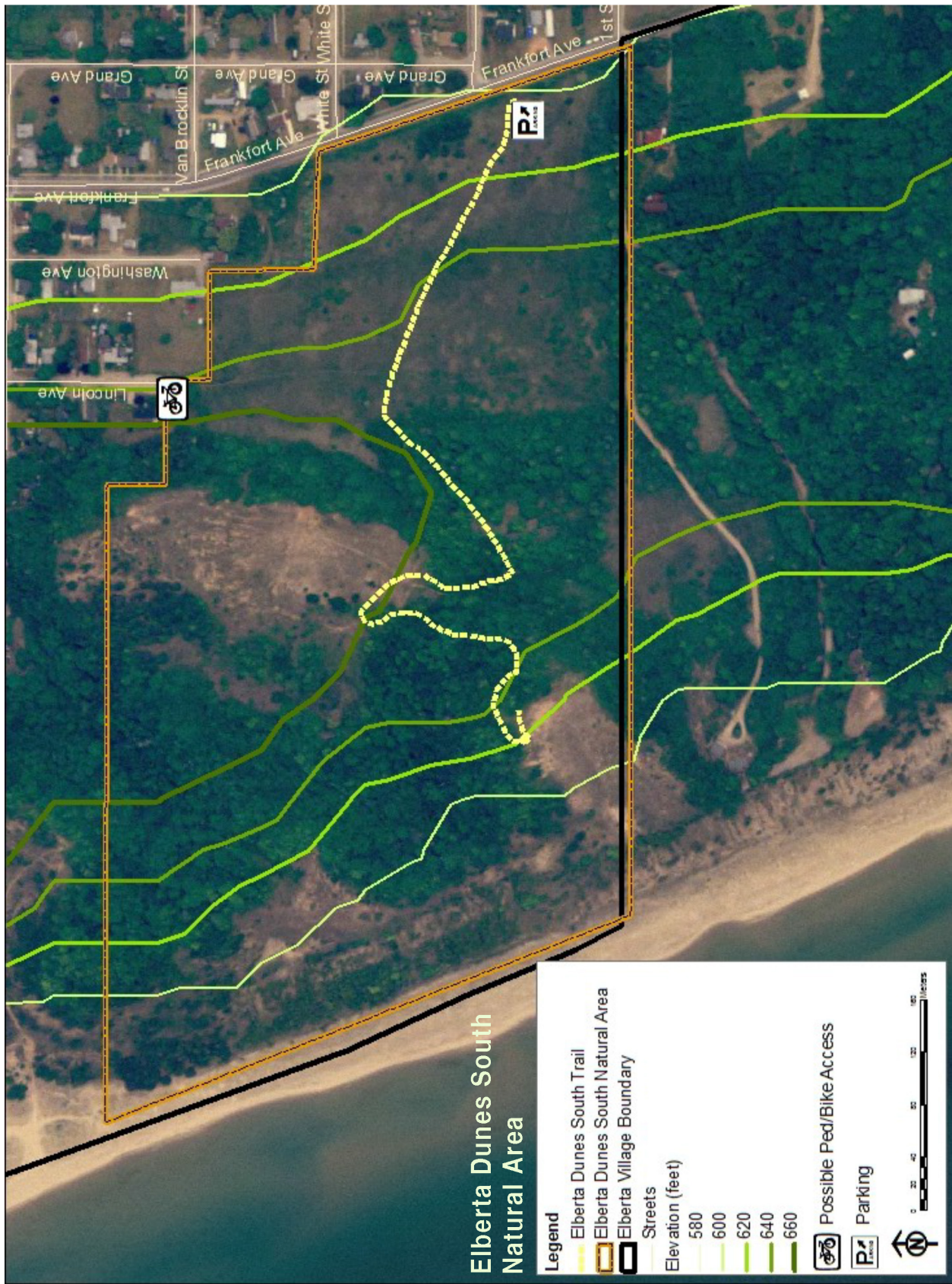
Elberta Dunes South Nature Trails





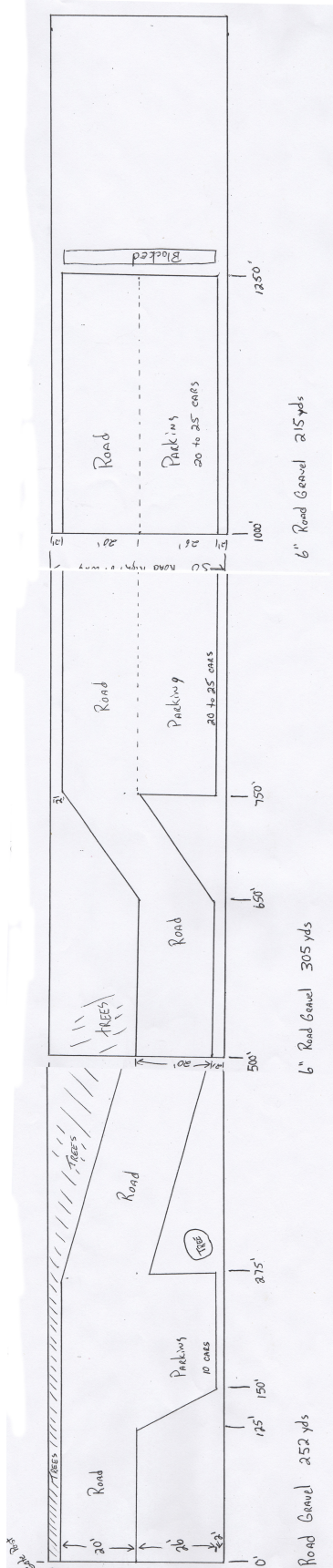


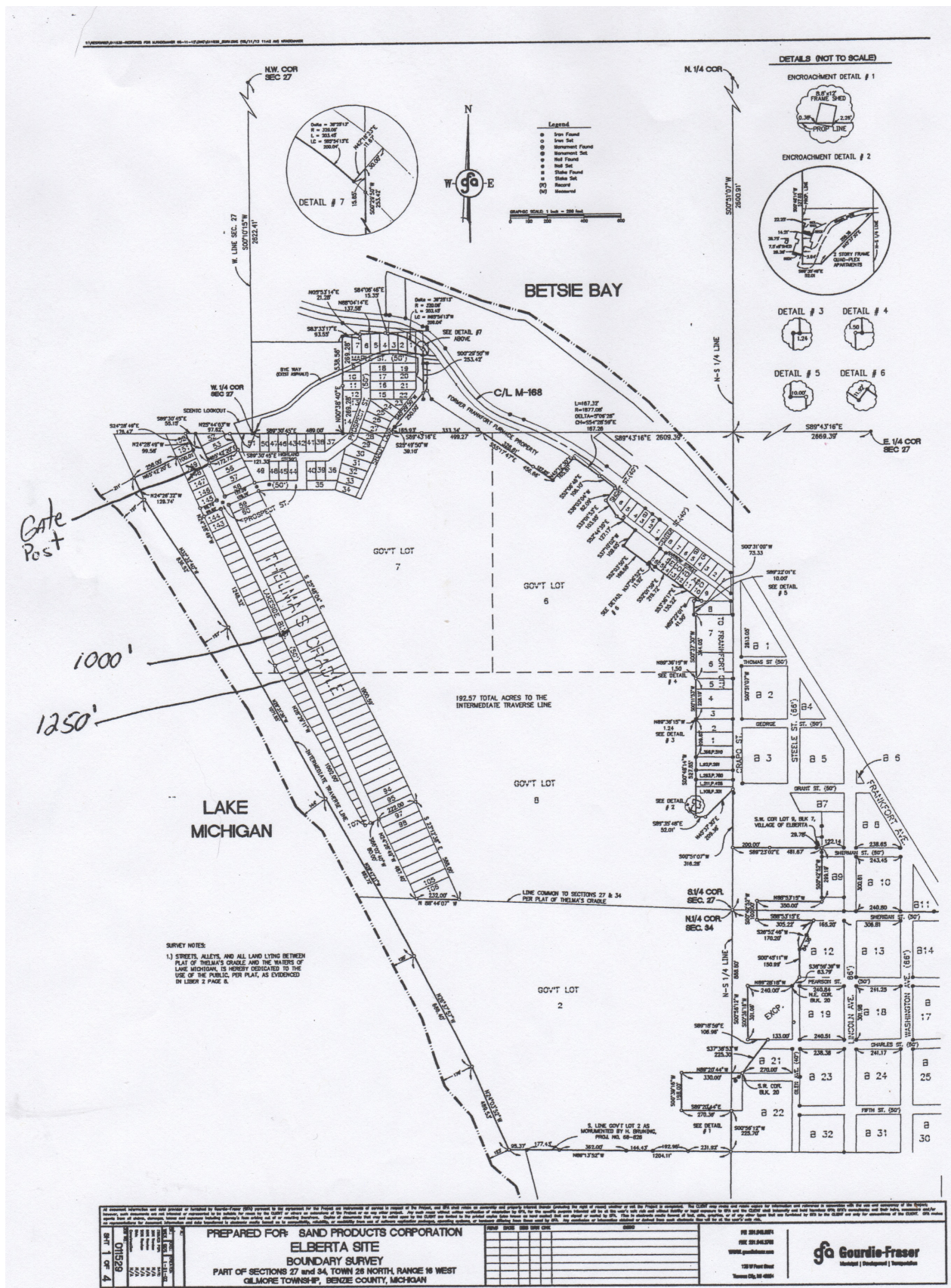




Appendix B: DPW Head Ken Bonney's Schematic of the Proposed Beach Road Project and Plat Map of Thelma's Cradle

Lakeside Blvd. is a platted road that extends approximately 1,400 feet. Because of wear and tear, erosion, and dune shift, it is hard to determine where the road is, and the two tracks and other worn paths are impassible for many smaller vehicles. In summer 2012 Ken Bonney put together this schematic as a possible plan for a 1,250-foot developed road. He estimated that at \$20/yard, a gravel road, including grading, would cost \$31,040 to create. The DEQ permit for constructing this road would be \$600 and would be good for 5 years. It's estimated to take two to





**Appendix C: Estimate of Work Still Needed on Life Saving Station
Submitted by Ross Thorsen**

INVENTORY NEEDS OF ELSS PROJECTS
February 2013

LSS BUILDING

<u>Est. Cost</u>	Activity
10,500	Build and install 30 missing wood storm windows
10,000	Rework Double Hung Windows
13,000	(Re) Paint exterior: 5,000-6,000 square feet
2,500	Replace wooden doors; these are narrow locker (exterior) doors that have been permanently shut
14,500	Replace all rotted exterior woodwork, including siding and sheathing behind large decking area. <u>Major Problem</u>
9,000	Rework large deck area and install grating to help drain water away from siding and doors. <u>Major Problem</u>
???	Access upper level so public can enter and use...may provide income for Village. Currently stairwell too narrow for upstairs access. --Ideas for how we can do this???
10,000	Repaint interior; replace broken locksets
2,200	Install coat racks
1,400	Install flood light at flag pole. Replace missing and broken outside outlet covers and boxes
\$73,100	Total (plus cost of upper level access)

Appendix D: Public Input Documentation

Legal Notices for Public Input Workshop, Public Review and Comment Period, and Public Meeting Held

Copy of Public Input Survey distributed at April 18, 2013 Public Input Workshop

Summary of Responses Received from Public Input Workshop

Summary of Responses Received from Public Review and Comment Period

Copy of Minutes from Public Meeting held TKTTK 2013



Parks and Recreation Commission

2014–19 Village of Elberta Recreation Plan Public Input Wanted!

The next 5-year plan for recreation in the Village of Elberta is now being prepared. It will cover the years 2014–19. We're revising the 2008–13 plan and we need your input. We want to know how you currently use Elberta's parks and natural areas and what recreational amenities you would like to see included in the plan.

All are welcome to attend the Public Input Session being held before the regular Village Council meeting

**Thursday, April 18, 2013
From 7 pm to 8 pm
Village Community Building
401 First Street
Elberta, MI 49628**

A Recreation Plan is a document communities create to define their recreation and resource conservation goals and to establish recreation grant eligibility. The plan will be used to guide the future development of recreational facilities, opportunities and programs in the Village of Elberta. It will also be used to seek funding, including funds earmarked for implementing Recreation Plans approved by the Department of Natural resources.

We hope to see you at the public input session. We will be completing a survey and want to hear your hopes and dreams for Elberta. A draft of the plan is available at the Village Office and at the Village of Elberta website at

<http://villageofelberta.com/village-of-elberta-parks-and-recreation-plan-2008-2013/>

If you can't make the hearing you can submit comments by email to Jennifer Wilkins at smilinjen10@yahoo.com, or by mail to Village of Elberta Parks and Recreation, 151 Pearson Street, Elberta, MI 49628. We'll incorporate your comments into the final plan.

This meeting is open to all members of the public under Michigan's open meetings act. If you are planning to attend and have a disability requiring any special assistance at the meeting, please notify Village Clerk Sharon Bower at (231) 352-7201.

151 Pearson Street, Elberta, MI 49628 • (231) 352-7201

Benzie County Record Patriot Legal Notices



Parks and Recreation Commission

2013 PARKS AND REC SURVEY

Every five years, the Village updates its Parks and Recreation Plan. We need your input to make a good plan for 2014–2019. Please take a few minutes to answer these questions. Thanks for your help!

1. Please tell us the number of people in your household and their ages.
2. Currently all Parks and Rec projects are funded by volunteer fundraising, except for the Farmers Market, which is funded by vendor booth revenue. How do you suggest Parks and Recreation services/resources be funded?

user fees grants/foundation support memberships volunteer fundraising

Other

3. How do you use each of Elberta's Park areas, and how often?

Elberta Historic Waterfront Park

Elberta Lake Michigan Beach

Dudley Penfold Memorial Park (aka Mini-Pond/Farmers' Market Park)

The Community Building/Ball field

Tot Park

Veterans Park

Anderson Park

Betsie Valley Trail

Elberta Dunes South

4. What changes would you like to see in Elberta's parks (equipment, maintenance, facilities etc.)?

5. What could we do in the next five years to make Elberta an even better destination for recreation?

6. Would you be willing to participate in workdays? Would you like to join the Parks and Rec Commission and/or the Solstice Committee? Volunteer opportunities abound!

- I'd like to participate in workdays
- I'd like to join the Parks and Rec Commission
- I'd like to join the Solstice Committee
- I'd like to help with historic preservation
- I'd like to help with Beach-related projects
- I'd like to help with the Farmers' Market
- I'd like to help with the Mini Pond Park boat launch/boardwalk project
- I'd like to help with the Elberta Life Saving Station
- I'd like to help with fishing-related projects
- I'd like to help with Betsie Valley Trail projects
- I'd like to help with Dunes Park South projects
- I'd like to help with the Elberta Arts and Crafts Fair
- I'd like to help start a community garden
- I have a big idea I'd like to share with the Commission
- Special skills I'd like to share _____

Please share your contact information if you checked any of the boxes above.

Name _____
phone number _____
e-mail address _____

151 Pearson Street, Elberta, MI 49628 • (231) 352-7201

Summary of Responses Received from Public Input Workshop

Public Present:

Summary of Responses Received from Public Review and Comment

Copy of Public Meeting Minutes

Appendix E: Approval Documentation

Official Resolution of Adoption by the Village of Elberta Council

Copy of letter transmitting adopted plan to the Benzie County Planning Department

Copy of letter transmitting adopted plan to the Northwest Michigan Council of Governments

